

Note: Position of Pier A and dimensions of bearing abutment in Plan 5 are to be confirmed with the Engineer after verification of dimension "B".

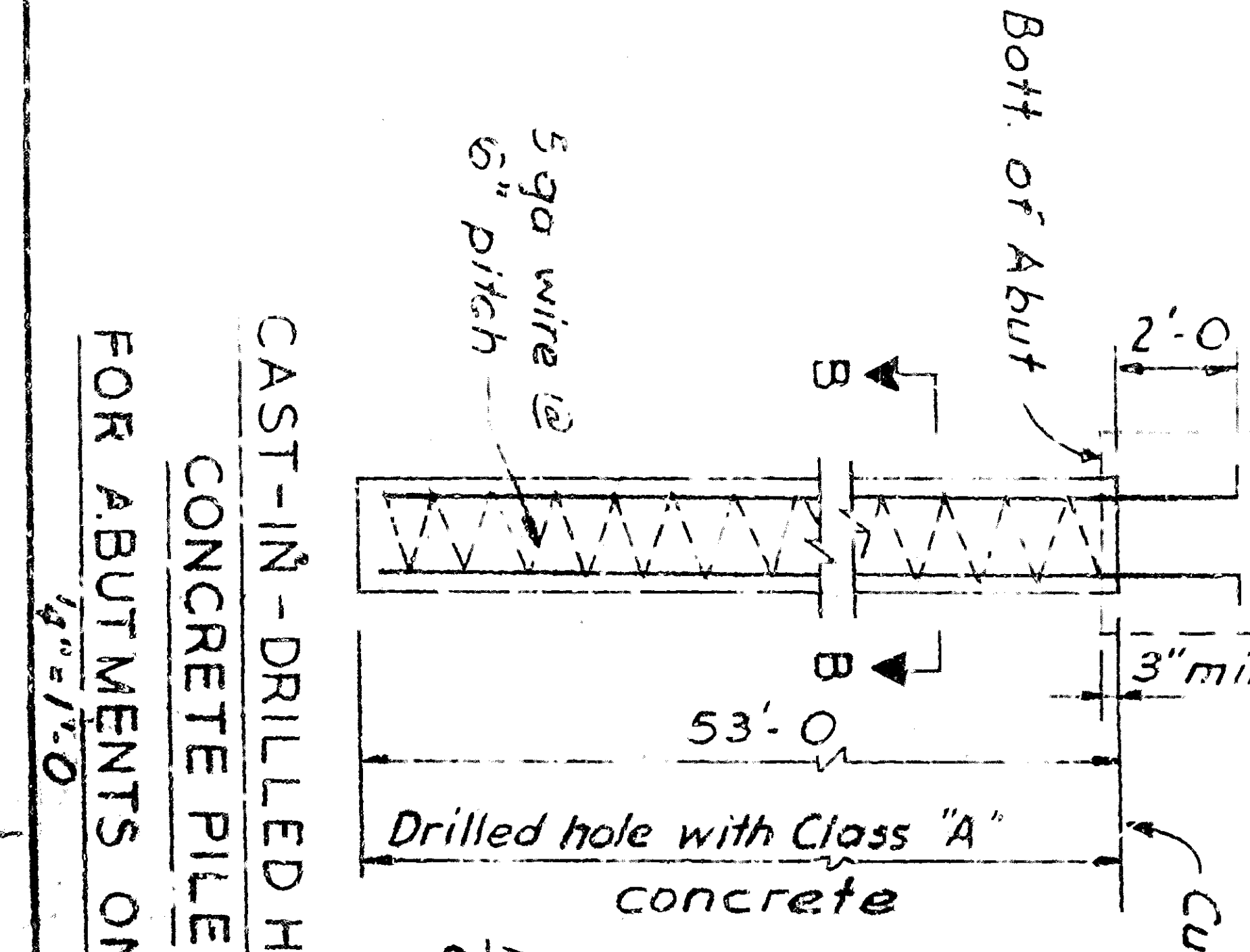
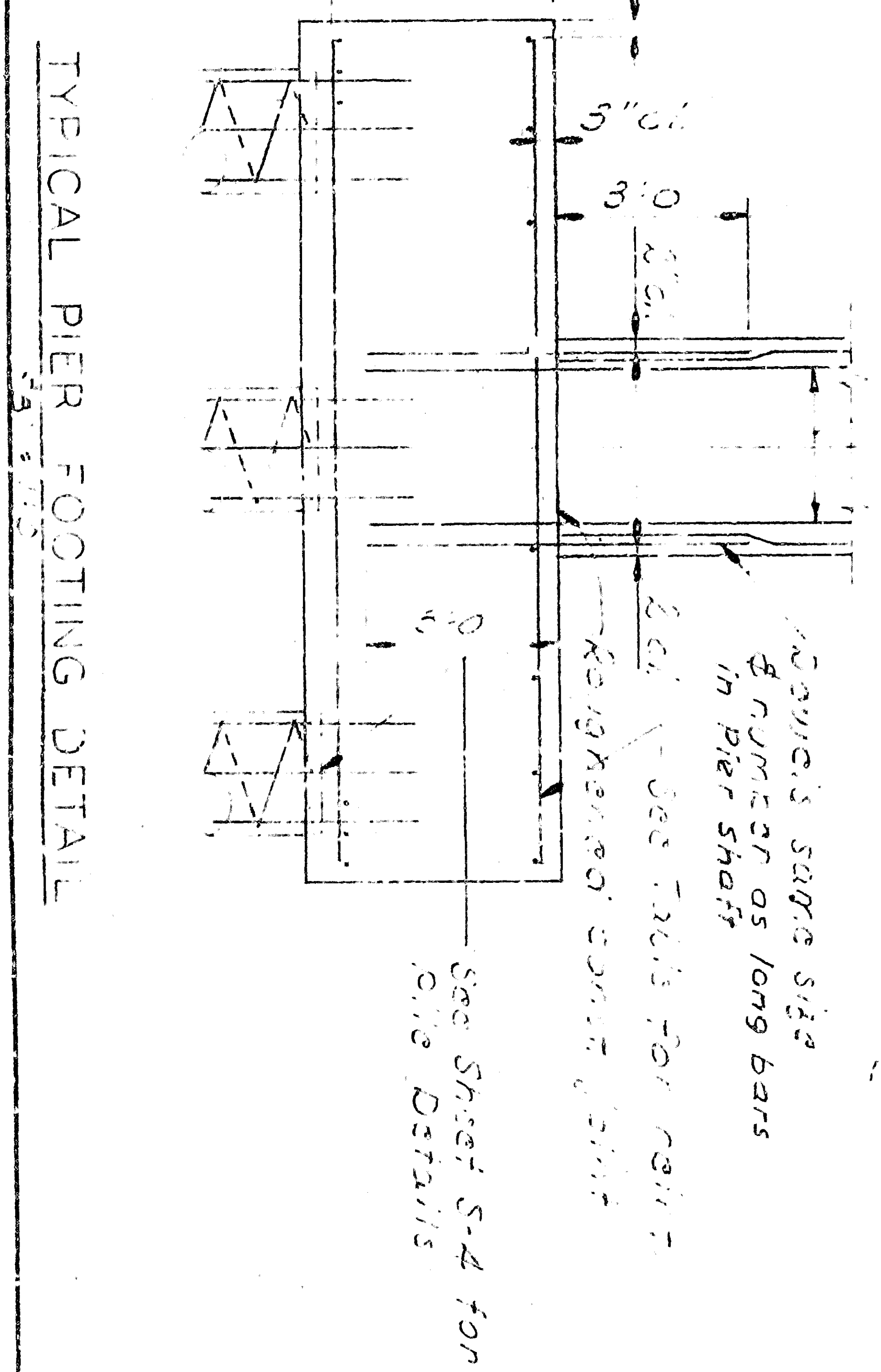
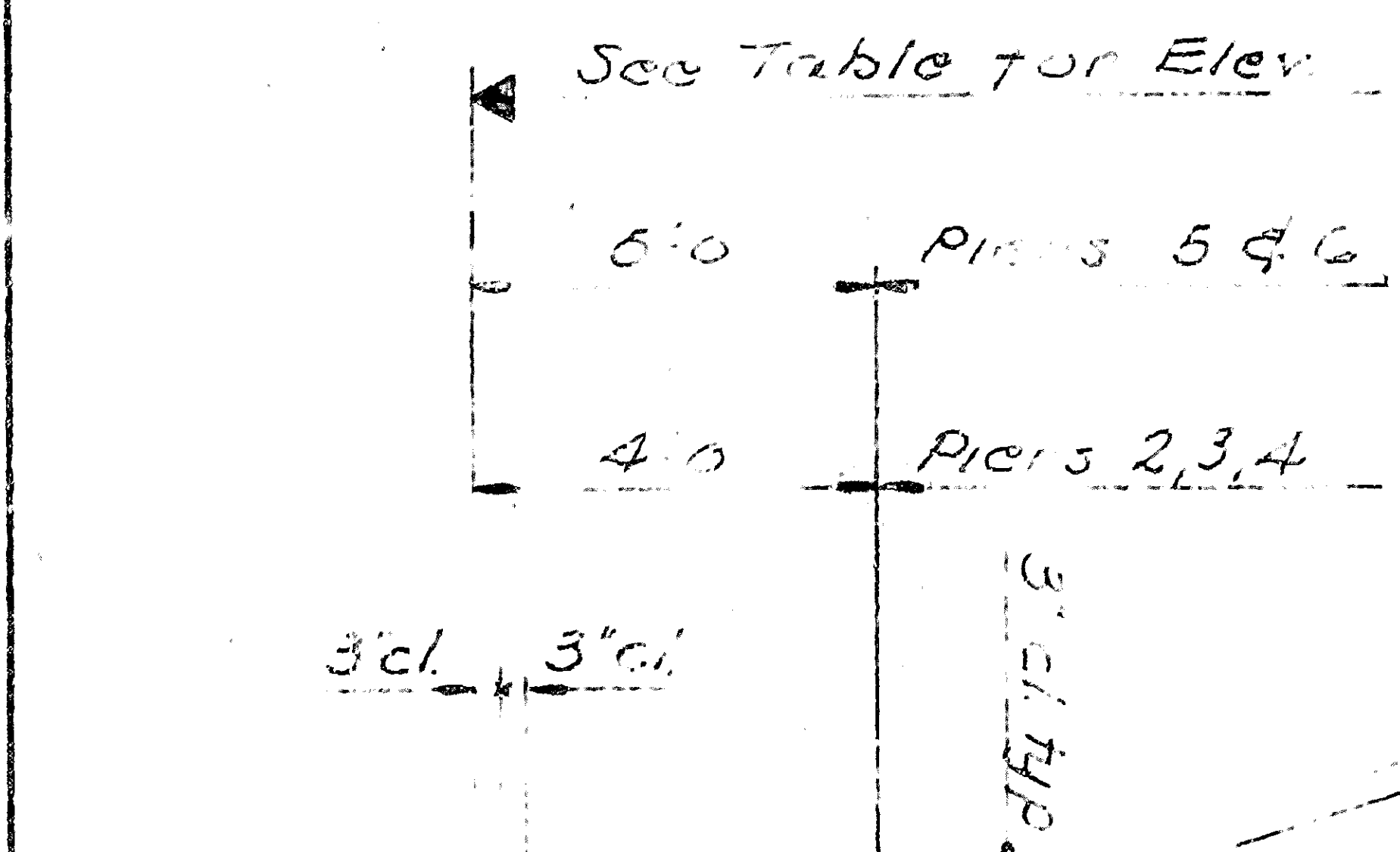
PIER FOOTING TABLE

NOTE: FOR ABUTMENT & ABOUT 7 DIMENSIONS SEE SH. A-2-2

| Pier | Plan 1 | Plan 2 | Plan 3 | Plan 4 | Plan 5 | Plan 6 |
|-------------------------------|--------|--------|--------|--------|--------|--------|
| Min. Tip Penetration to Elev. | 10.50 | 16.50 | 22.00 | 27.50 | 33.00 | 38.50 |
| Estimated CSR | 40' | 40' | 40' | 40' | 40' | 40' |

NOTE: ALL DIMENSIONS ARE IN FEET AND INCHES. DIMENSIONS IN PARENTHESES ARE IN FEET AND INCHES.

| Span | Span 1 | Span 2 | Span 3 | Span 4 | Span 5 |
|--------|--------|--------|--------|--------|--------|
| Length | 32.84 | 61.0 | 53.8 | 35.15 | 26.10 |
| Width | 40.0 | 40.0 | 40.0 | 40.0 | 40.0 |
| Area | 1313.6 | 2446.0 | 2160.4 | 1406.2 | 1044.6 |



AS BUILT

COLTON CUT-OFF

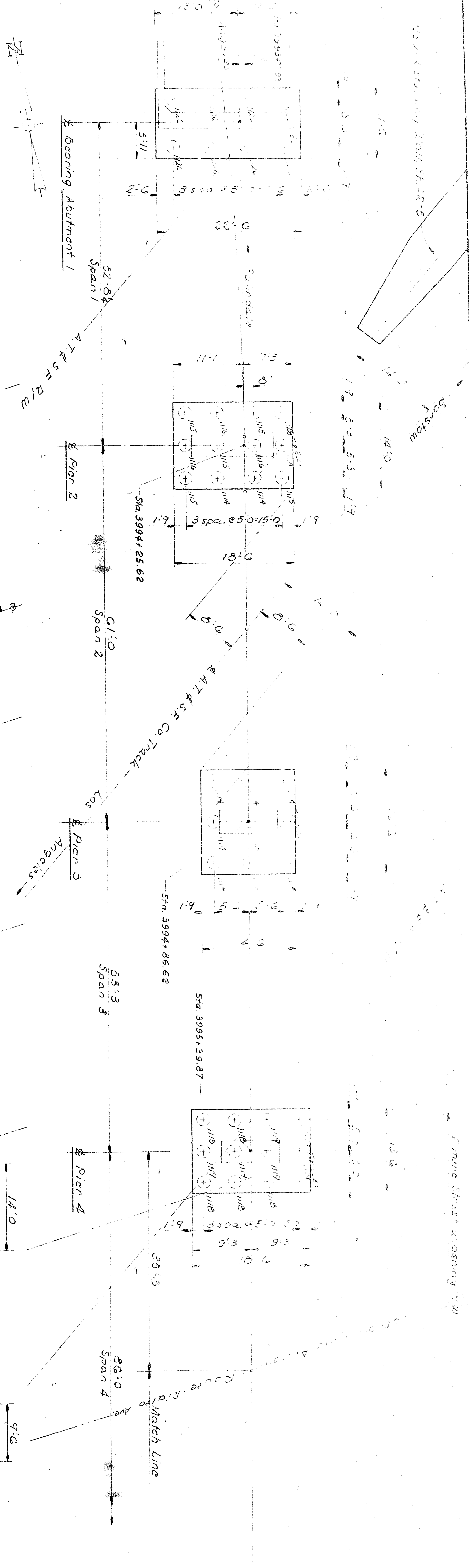
SOUTHERN PACIFIC COMPANY

CITY OF SAN BERNARDINO
ARROW ROUTE-RIA TO AVE/JUNDERPAS
BRIDGE MP 49.00

FOUNDATION PLAN

| | |
|-------|---------------------------|
| DATE | 3/1/64 |
| BY | SAI FRANCISCO, CALIFORNIA |
| SCALE | AS SHOWN |
| DATE | 3/1/64 |
| BY | SAI FRANCISCO, CALIFORNIA |

← Pacific Elect. Co. Track ← S.P. Co. Track



Note: Position of Pier 1 and dimensions of bearing abutment in Plan 5 are to be confirmed with the Engineer after verification of dimension "B".

PIER FOOTING TABLE

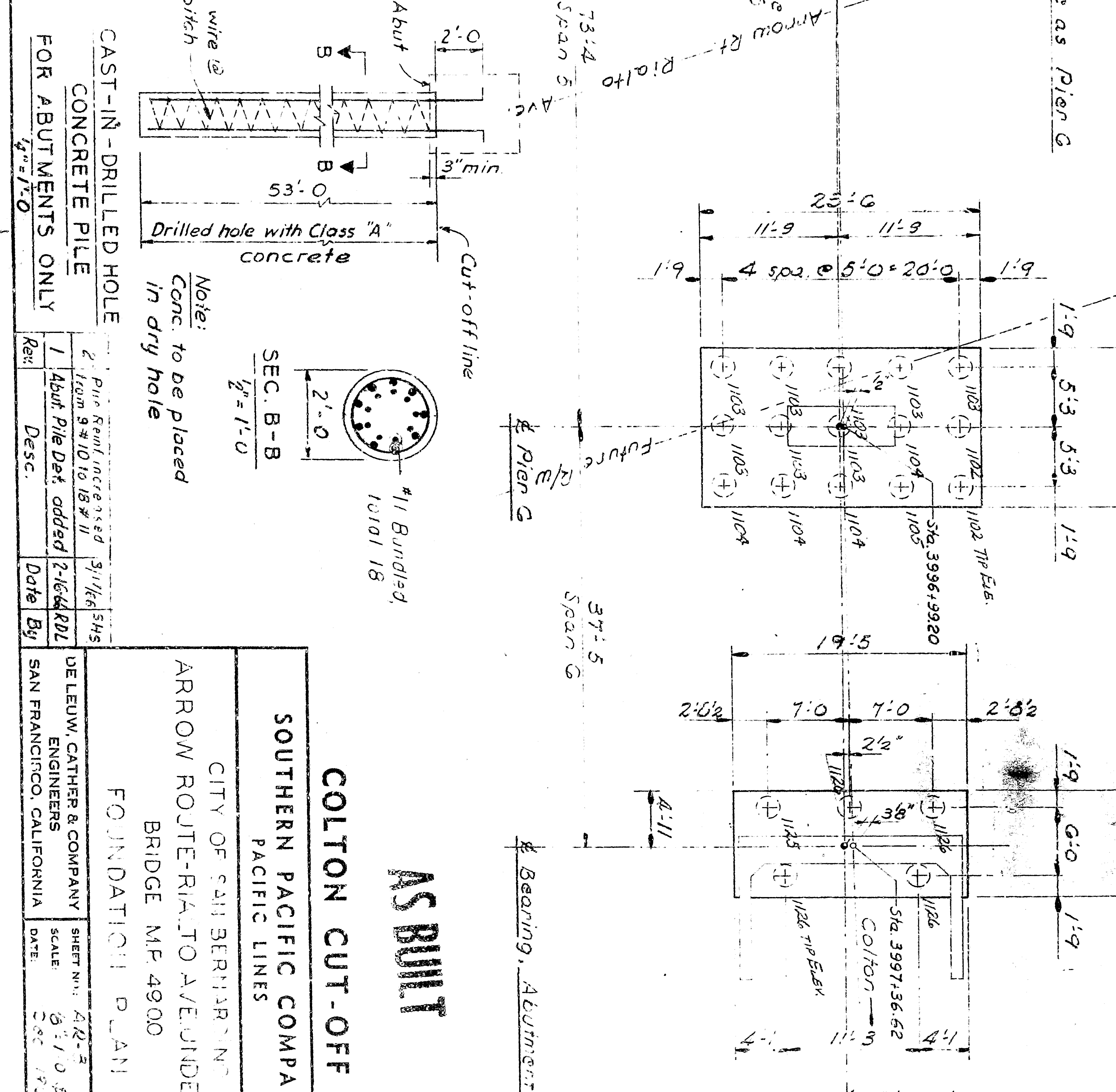
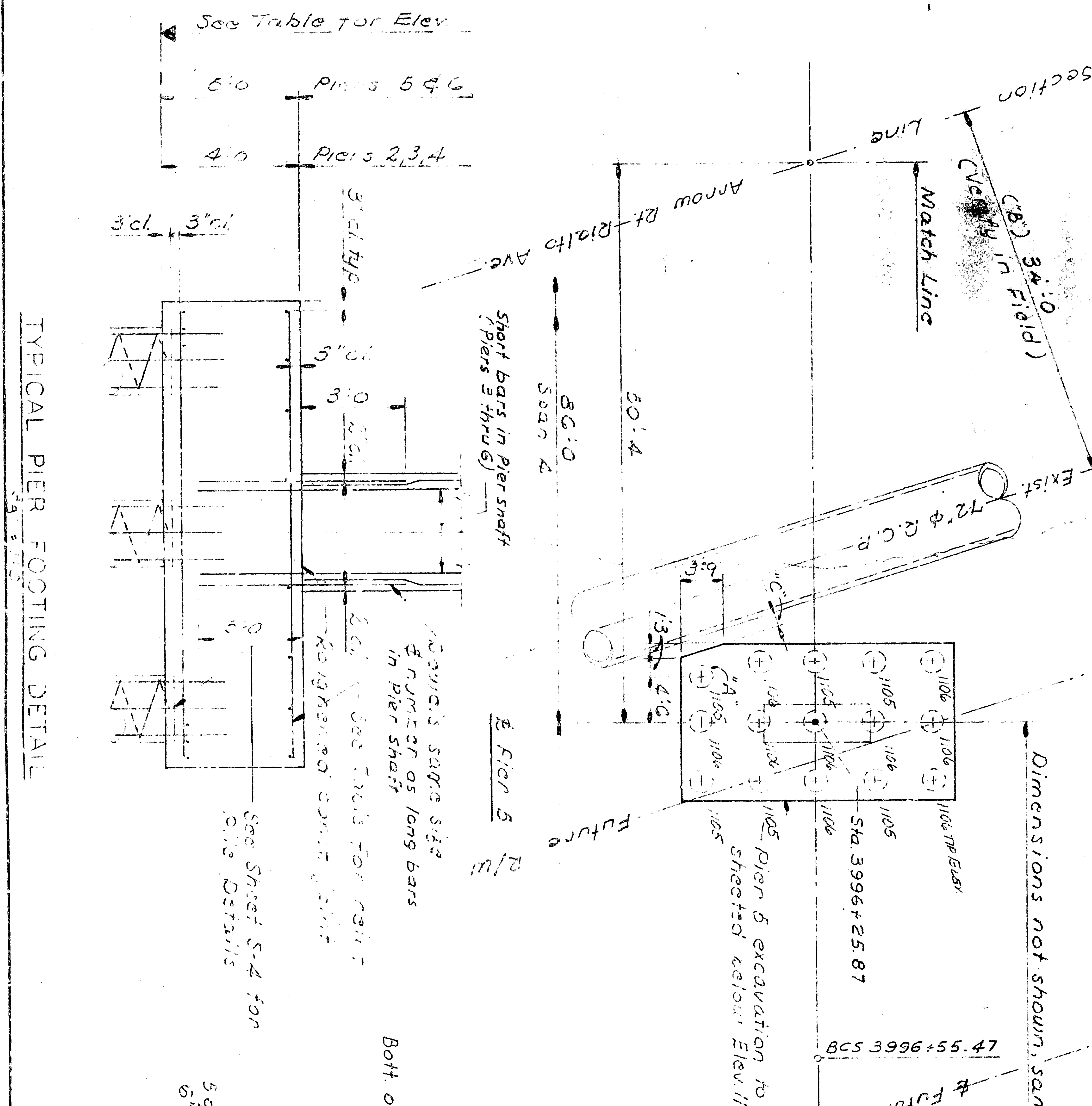
NOTE: FOR ABUTMENT & ABOUT 7 DIMENSIONS SEE SH. A-2-4

| Pier No. | Plan 1 | Plan 2 | Plan 3 | Plan 4 | Plan 5 | Plan 6 |
|--------------------------|--------|--------|--------|--------|--------|--------|
| Tip Penetration to Elev. | 10.50 | 16.50 | 22.00 | 27.50 | 33.00 | 38.50 |
| Estimated Csr | 40' | | | | | 40' |

NOTE: ALL DIMENSIONS ARE TO CENTER UNLESS OTHERWISE NOTED

| Span | Abutment | Pier | Span | Abutment | Pier | Span | Abutment | Pier | Span | Abutment |
|-------|----------|------|------|----------|------|------|----------|------|------|----------|
| 1 | 2 | 3 | 4 | 5 | 6 | 7 | 8 | 9 | 10 | 11 |
| 32.84 | 61.0 | 53.8 | 86.0 | 73.4 | 50.0 | 50.0 | 50.0 | 50.0 | 50.0 | 50.0 |

SEE TABLE FOR ELEV. OF PIER TOPS

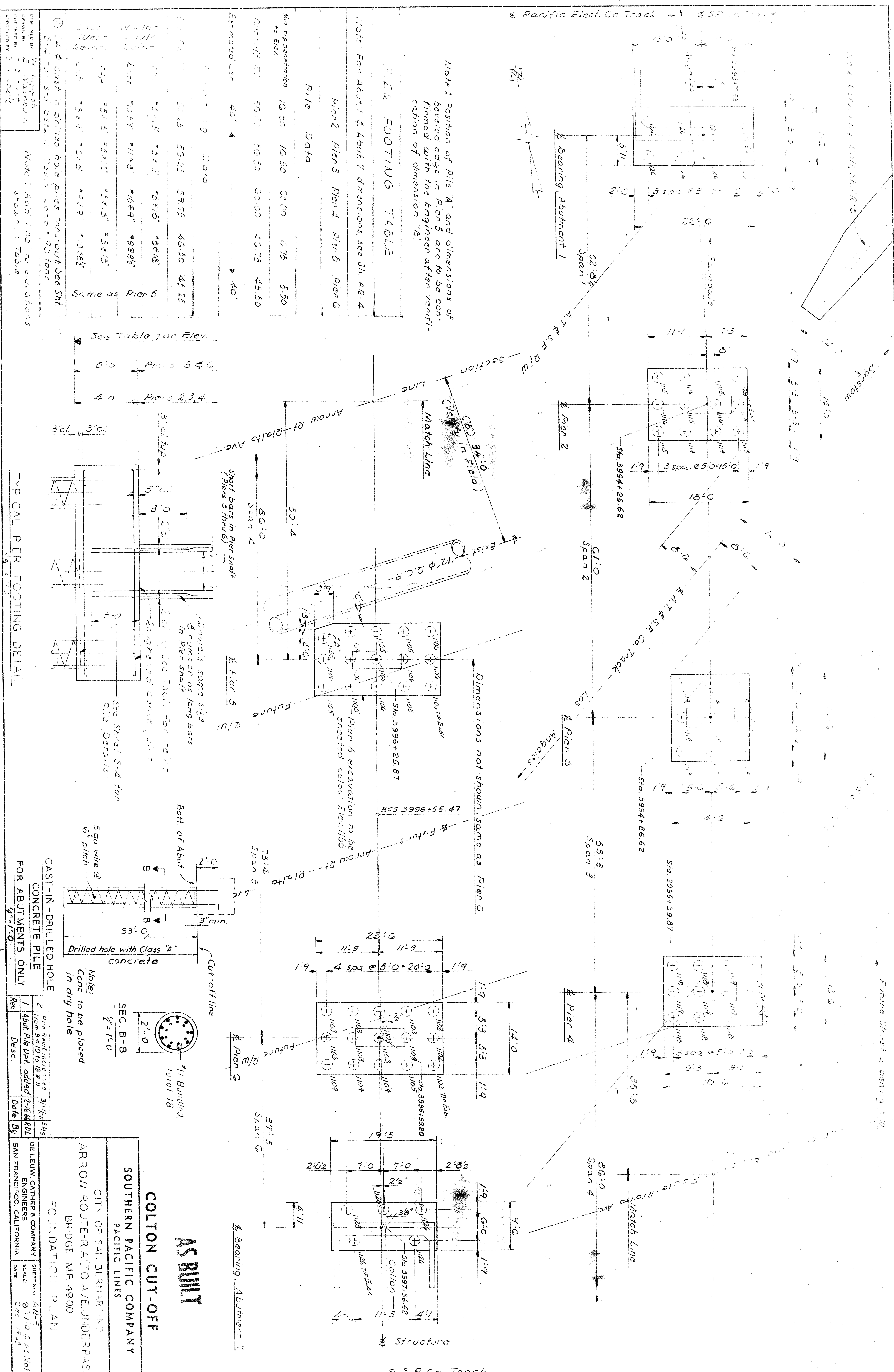


AS BUILT

COLTON CUT-OFF

SOUTHERN PACIFIC COMPANY
CITY OF SAN BERNARDINO
ARROW ROUTE-RIA TO AVE. UNDERPASS
FOUNDATION PLAN

| | | |
|-------------|------|----|
| DESIGNED BY | DATE | BY |
| CHECKED BY | DATE | BY |
| APPROVED BY | DATE | BY |



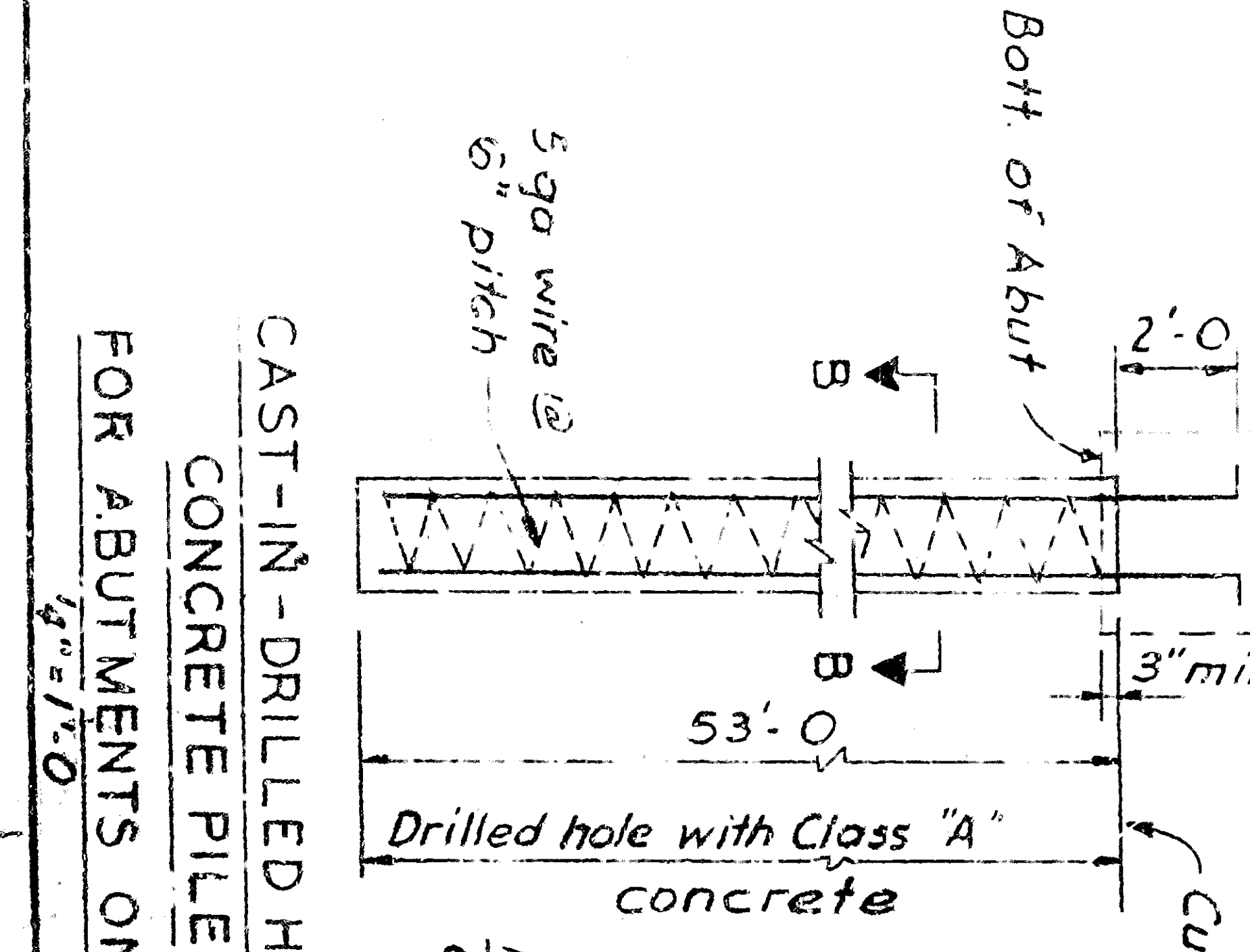
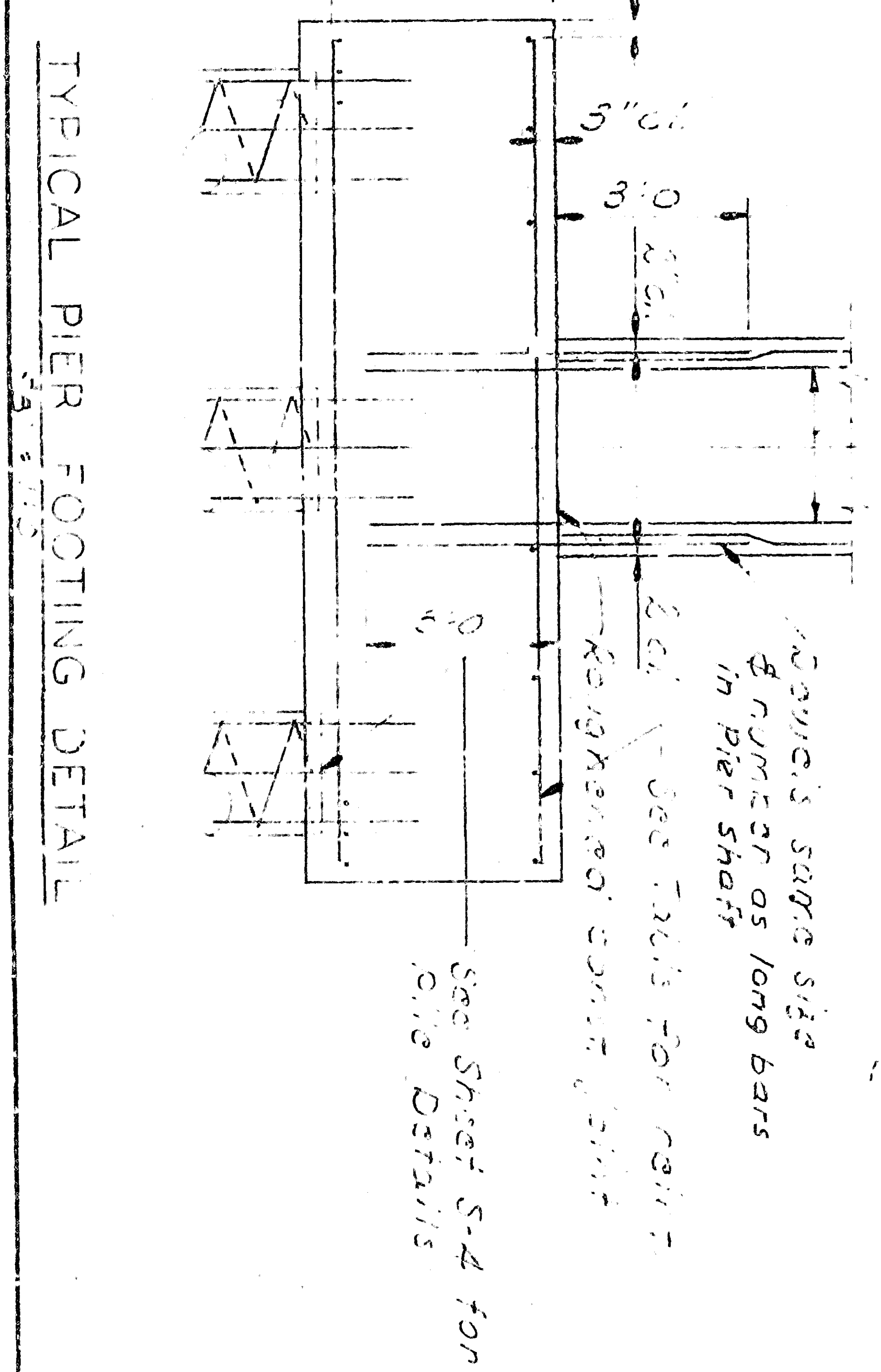
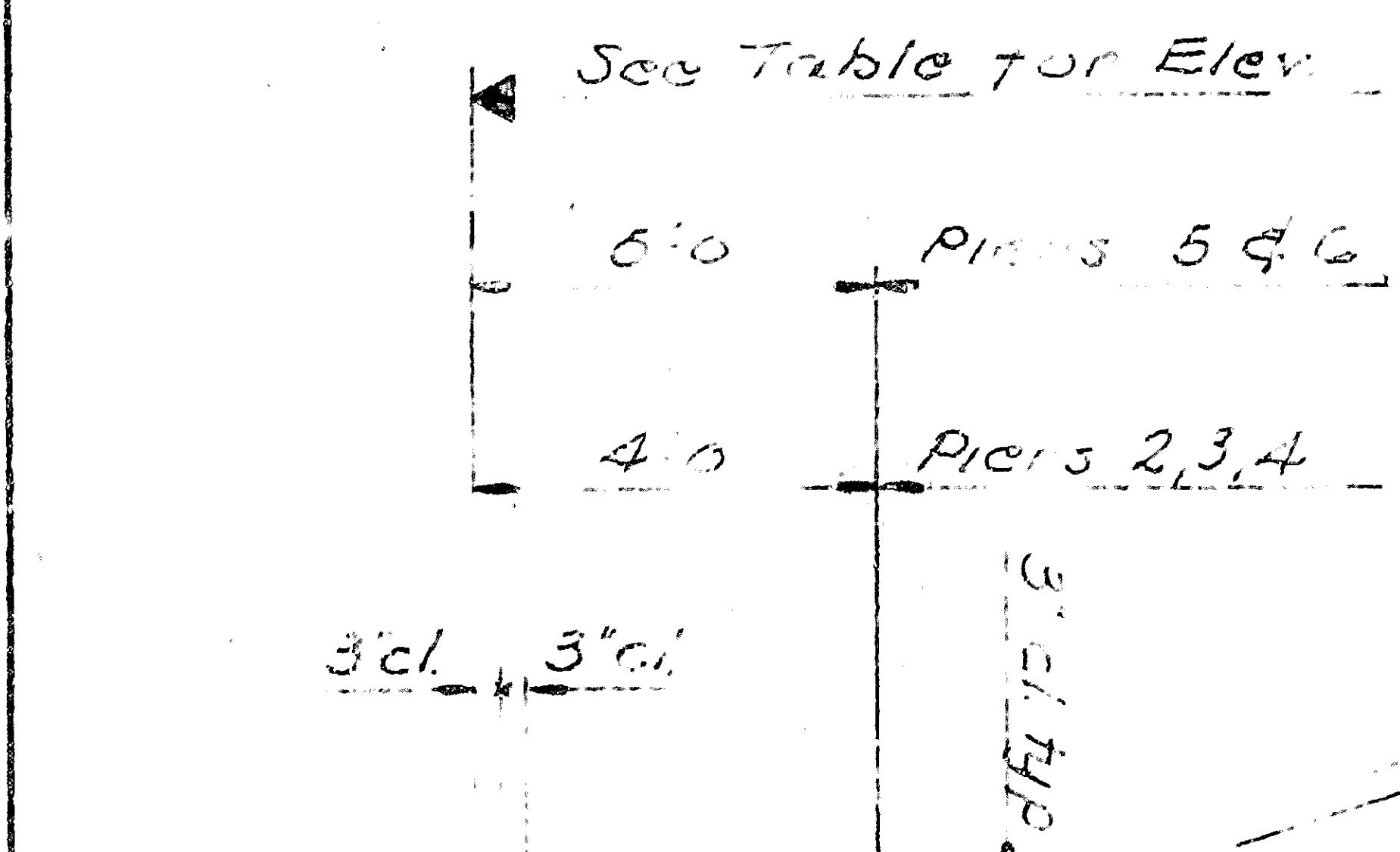
Note: Position of Pier 4 and dimensions of bearing abutment in Plan 5 are to be confirmed with the Engineer after verification of dimension "B".

PIER FOOTING TABLE

NOTE: FOR ABUTMENT 1 & ABUTMENT 7 DIMENSIONS SEE SH. A-2-2

| Pier | Plan 1 | Plan 2 | Plan 3 | Plan 4 | Plan 5 | Plan 6 |
|-------------------------------|--------|--------|--------|--------|--------|--------|
| Min. Tip Penetration to Elev. | 10.50 | 16.50 | 22.00 | 27.50 | 33.00 | 38.50 |
| Estimated CSR | 40' | 40' | 40' | 40' | 40' | 40' |

| Span | Length | Centerline Station | Start Station | End Station |
|--------|--------|--------------------|---------------|-------------|
| Span 1 | 52.84 | 59.75 | 46.50 | 45.25 |
| Span 2 | 61.0 | 59.75 | 46.50 | 45.25 |
| Span 3 | 53.8 | 59.75 | 46.50 | 45.25 |
| Span 4 | 68.0 | 59.75 | 46.50 | 45.25 |



AS BUILT

COLTON CUT-OFF

SOUTHERN PACIFIC COMPANY
 CITY OF SAN BERNARDINO
 ARROW ROUTE-RIA TO AVE/JUNDERPAS
 BRIDGE MP 49.00
 FOUNDATION PLAN

| Rev. | Desc. | Date | By |
|------|----------|--------|-----|
| 1 | As Built | 3/1/64 | ... |

DE LEUW, CATHER & COMPANY
 ENGINEERS
 SAN FRANCISCO, CALIFORNIA